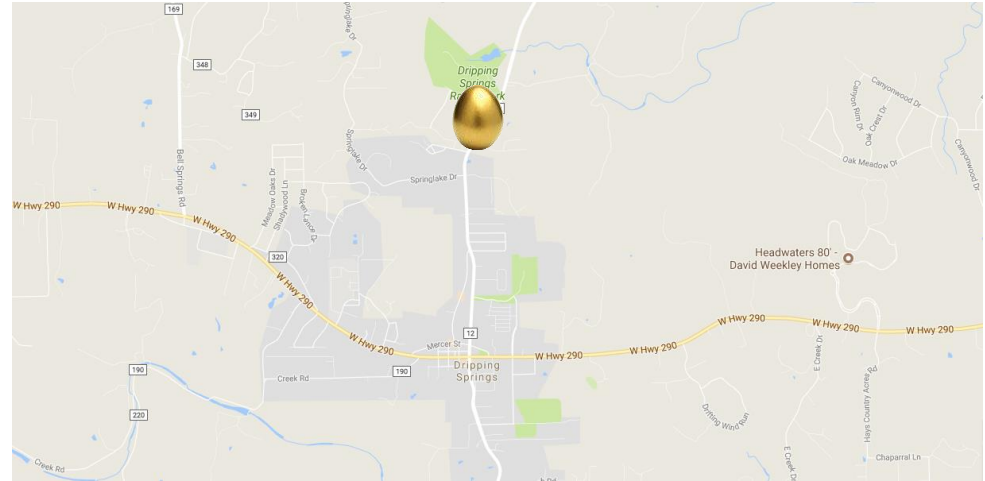




FOR LEASE: 29035 RR 12, DRIPPING SPRINGS 78620
 NEW BUILDING: BAR (FULL 51 PERCENT COCKTAIL LOUNGE), FOOD TRUCK SPACES



AVAILABLE NOW
 \$ 9500 MONTHLY ENTIRE SITE: INCLUDES NNN

Submarket: Hays County (City of Dripping Springs)

- Customizable space
- Children's play area
- Ample parking – 68+ spaces
- Great outdoor space - multiple hundred-year-old oak trees on site
- Walking proximity from Founder's Ridge, Cortaro, Legacy Trails, and Springlake subdivisions and Harrison Ranch Park Events Center
- One mile to downtown Dripping Springs, 25 minutes to Bee Cave, with quick access to US HWY 290W, Ben White/HWY 71

JESSE LUNSFORD, BROKER/OWNER 512.462.2400 / jesse@raineyventures.com
 NEIL STOKES, BROKER/OWNER 512.633.2233 / specialagentstokes@gmail.com

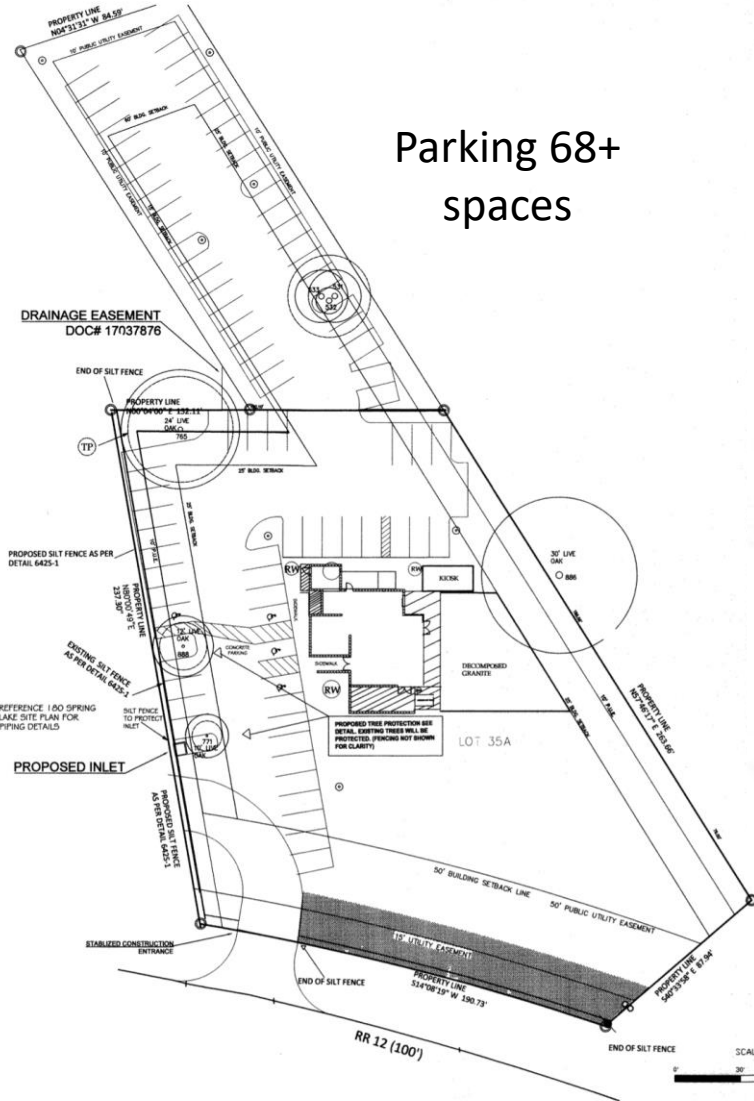
The information included in this presentation has been obtained from sources believed to be reliable. While we do not doubt its accuracy, Rainey Ventures/SAG makes no guarantee, warranty or representation about the information presented.





FOR LEASE: 29035 RR 12, DRIPPING SPRINGS 78620
 NEW BUILDING: BAR (FULL 51 PERCENT COCKTAIL LOUNGE), FOOD TRUCK SPACES

Parking 68+
spaces



JESSE LUNSFORD, BROKER/OWNER 512.462.2400 / jesse@raineyventures.com
 NEIL STOKES, BROKER/OWNER 512.633.2233 / specialagentstokes@gmail.com

The information included in this presentation has been obtained from sources believed to be reliable. While we do not doubt its accuracy, Rainey Ventures/SAG makes no guarantee, warranty or representation about the information presented.

